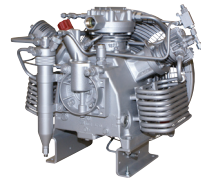


MICRO SERIES™ C120

CNG System For Small Fleets



FEATURES



COMPRESSOR

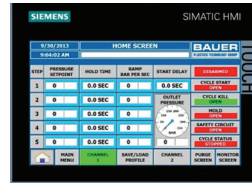
Featuring BAUER's proven C120 three-stage air-cooled compressor at the heart of the system.

- › Ideal for sites with low inlet pressure
- › Designed for continuous duty application
- › Extremely durable and low maintenance
- › Pressure lubricated



COST OF OWNERSHIP

Designed for long periods between maintenance intervals and very low cost of ownership. 8000 hrs between ring changes. 30,000 hrs before major overhaul. Lifetime BAUER support.



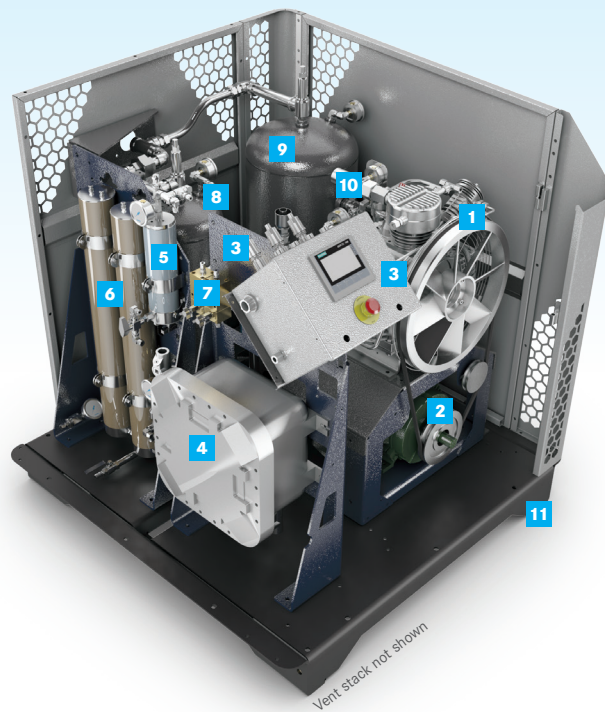
CONTROL SYSTEM

State-of-the-art control system and intuitive machine interface makes operating the unit simple.

- › Excellent diagnostics
- › Remote interface via smartphone option
- › Online manual and operating / maintenance instructions standard

BENEFITS

- › **Powerful, totally integrated system** in a compact footprint.
- › **BAUER'S legendary performance, quality, and reliability** are backed by the best warranty in the industry.
- › **Integrated CNG system, both easy and economical to install.** Intended for overnight refueling but capable of fast fill applications. Just connect utilities, hook up fuel post (fuel post not included) and the system is ready to fuel. Choose single or three phase.
- › **Appealing design** suitable for placement within public view.
- › **Efficient and reliable.** This unit is a perfect system for organizations getting started with CNG.
- › **Easy to maintain with low cost of ownership,** makes the unit very economical to operate.



- 1 BAUER C 120 COMPRESSOR
- 2 HIGH EFFICIENCY TEFC MOTOR (BELT GUARD NOT SHOWN)
- 3 NEMA 4 PLC CONTROL PANEL WITH TOUCH SCREEN OPERATOR INTERFACE AND EMERGENCY STOP BUTTON
- 4 NEMA 7 STARTER PANEL
- 5 FINAL SEPARATOR
- 6 HIGH PRESSURE DRYER (OPTIONAL)
- 7 AUTOMATIC CONDENSATE DRAIN
- 8 INLET BUFFER TANK
- 9 VAPOR RECOVERY TANK
- 10 LOCALLY MOUNTED PRESSURE GAUGES
- 11 PRECISION FORMED HEAVY-DUTY STEEL SKID

- 11 POWDER-COATED GALVANNEAL STEEL FOR SUPERIOR CORROSION RESISTANCE (10 YEAR WARRANTY)
- 12 HINGED PANEL FOR ACCESS
- 13 ENCLOSURE DESIGNED FOR DURABILITY AND ATTRACTIVE APPEARANCE
- 14 REMOVABLE PANELS ON 3 SIDES FOR ACCESS

OPTIONAL FEATURES

- › High Pressure Drying
- › Cell Phone Modem with Remote Notification
- › Compressor Crankcase Heater

Designed in compliance with NFPA 52 and NFPA 70 Division 2, Group D.



TECHNICAL DATA

Model*	Inlet pressure		Final pressure (max.)		Capacity			Number of Stages	Running Speed	Motor				
	PSIG		BAR		CFM	M ³ /H	DGE/H			GGE/H	RPM	hp	kW	
	min	max	min	max										max
C120-6	1	5	0.07	0.34	5000	345	6.3	11	2.7	3.2	3	965	5	3.7
C120-9	1	5	0.07	0.34	5000	345	9	15	4	4.5	3	1350	7.5	5.5

Note: All capacities are referenced to maximum inlet pressure. Capacity is reduced if inlet pressure is less than maximum. Performance tolerance +/- 5%. *C120-6=230 V, 1 Phase, 60 Hz; C120-9= 230-460 V, 3 Phase, 60 Hz

SYSTEM FOOTPRINT

- DIMENSIONS L X W X H inches (mm)**
- › 55" x 57" x 52" (1397mm x 1448mm x 1321mm) approximate excludes vent stack
- WEIGHT pounds (kg)**
- › 1430 - 1515 lb (649 - 687 kg) depending upon model and options

CUSTOMER SUPPORT

- GLOBAL SUPPORT
- SINGLE SOURCE RESPONSIBILITY
- LOW COST OF OWNERSHIP
- LIFECYCLE PERFORMANCE

FOR MORE INFORMATION PLEASE VISIT:
www.BauerCustomerSupport.com

